



RATHBONE MARKET, CANNING TOWN, E16

LET

£1,750 PCM

One Bedroom Apartment | First Floor | Furnished | Private Balcony | Open Plan Reception Room | Ample Storage | Modern Bathroom | Close To Canning Town Station (Jubilee Line & DLR)

- First floor
- Furnished
- Modern development
- One bedroom
- Private balcony

A bright and spacious one bedroom apartment positioned on the first floor of this modern purpose built block.

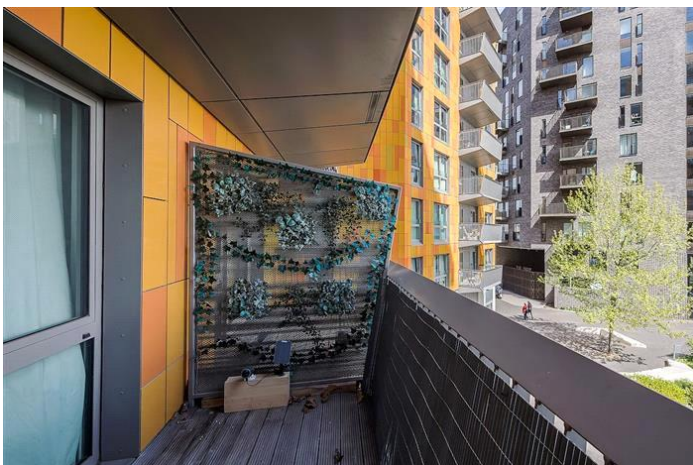
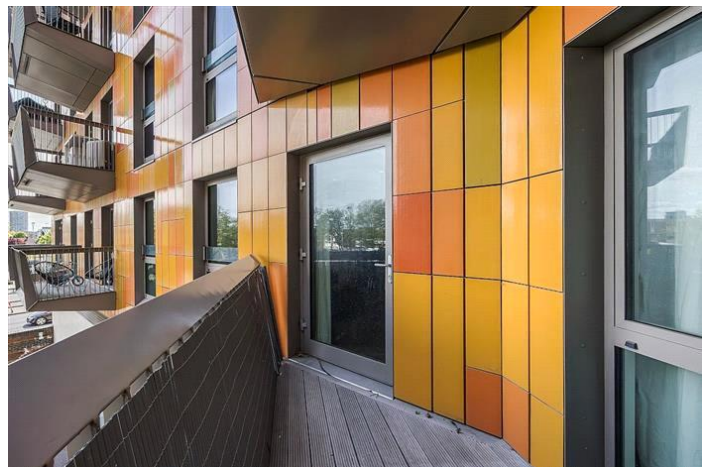
This apartment comprises entrance hall with storage cupboard, an open plan reception room with fully fitted kitchen, large bedroom, modern bathroom and a private balcony.

Rathbone Market is within walking distance to Canning Town station (Jubilee line and DLR) as well as local amenities including supermarkets, cafes & gyms.

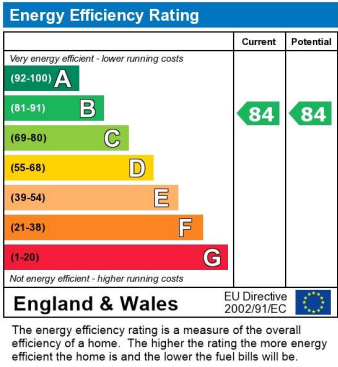
Please note the heating, hot water and electricity are charged at £200.00 per month.

Deposit: £2,019.23

Holding Deposit: £403.84



RATHBONE MARKET, CANNING TOWN, E16
£1,750 PCM



Whilst every effort is made to ensure the accuracy of these details, it should be noted that the measurements are approximate only. Floorplans are for representation purposes only and prepared according to the RICS Code of Measuring Practice by our floorplan provider. Therefore, the layout of doors, windows and rooms are approximate and should be regarded as such by any prospective tenant.