



## PILCH HOUSE, BOW, E3

£390,000 Leasehold

**SSTC**

Situated on the third floor is this modern, two bedroom apartment. The property comprises large entrance hall with storage cupboard, open plan reception room with floor to ceiling windows, fully integrated kitchen, private balcony, two double bedrooms and modern family bathroom.

Situated on the third floor is this modern, two bedroom apartment. The property comprises large entrance hall with storage cupboard, open plan reception room with floor to ceiling windows, fully integrated kitchen, private balcony, two double bedrooms and modern family bathroom.

The property ideally located being within walking distance from Devons Road DLR station.

Council Tax Band: D

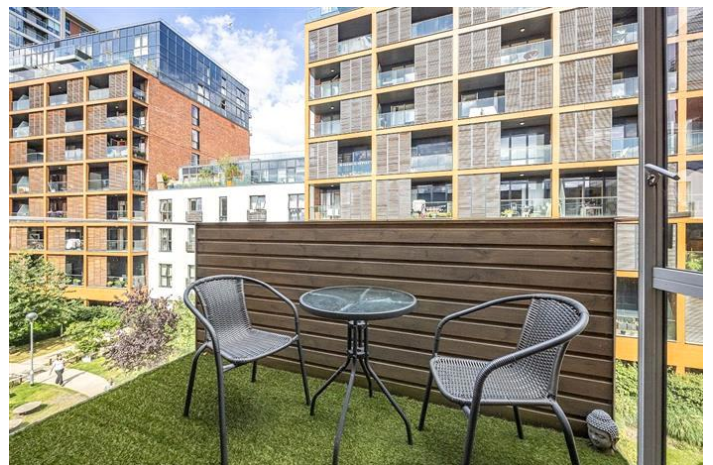
Tenure: Leasehold (118 years)

Ground Rent: £400 per year

Service Charge: £2,412 per year

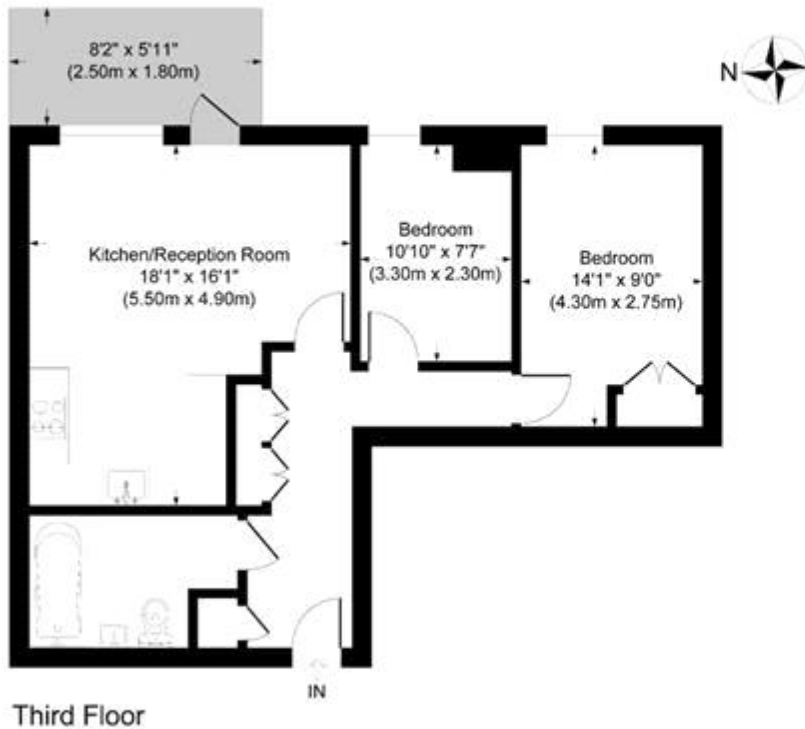
To check broadband and mobile phone coverage please visit Ofcom here [ofcom.org.uk/phones-telecoms-and-internet/advice-for-consumers/advice/ofcom-checker](https://www.ofcom.org.uk/phones-telecoms-and-internet/advice-for-consumers/advice/ofcom-checker)





## PILCH HOUSE, BOW, E3

£390,000 Leasehold




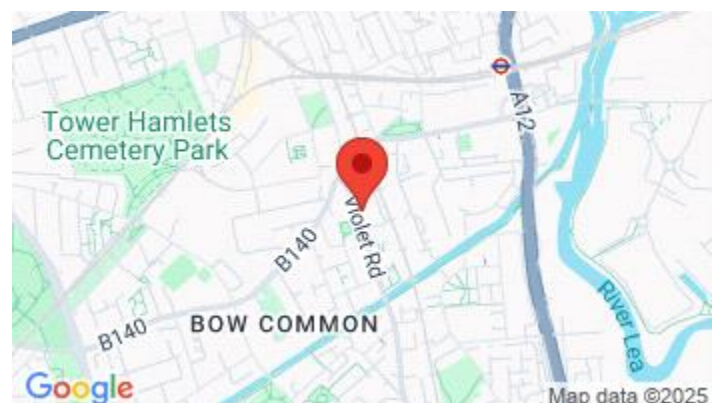
## Pilch House 27 Violet Road

Approximate Gross Internal Area  
Total = 60.6 sq m / 652 sq ft

This plan is for layout guidance only. Not drawn to scale unless stated. Windows and door openings are approximate. Whilst every care is taken in the preparation of this plan, please check all dimensions, shapes and compass bearings before making any decisions reliant upon them.

THE360IMAGE  
www.the360image.co.uk

Energy Efficiency Rating		Current	Potential
Very energy efficient - lower running costs			
(92-100) <b>A</b>			
(81-91) <b>B</b>		85	85
(69-80) <b>C</b>			
(55-68) <b>D</b>			
(39-54) <b>E</b>			
(21-38) <b>F</b>			
(1-20) <b>G</b>			
Not energy efficient - higher running costs			
<b>England &amp; Wales</b>		EU Directive 2002/91/EC	
			
The energy efficiency rating is a measure of the overall efficiency of a home. The higher the rating the more energy efficient the home is and the lower the fuel bills will be.			



Whilst every effort is made to ensure the accuracy of these details, it should be noted that the measurements are approximate only. Floorplans are for representation purposes only and prepared according to the RICS Code of Measuring Practice by our floorplan provider. Therefore, the layout of doors, windows and rooms are approximate and should be regarded as such by any prospective purchaser. Any internal photographs are intended as a guide only and it should not be assumed that any of the furniture/fitings are included in any sale. Where shown, details of lease, ground rent and service charge are provided by the vendor and their accuracy cannot be guaranteed, as the information may not have been verified and further checks should be made either through your solicitor/conveyance. Where appliances, including central heating, are mentioned, it cannot be assumed that they are in working order, as they have not been tested. Please also note that wiring, plumbing and drains have not been checked.