



MORO APARTMENTS, POPLAR, E14

£2,150 PCM

LET

SIX MONTH LET ONLY | Two Bedroom Apartment | Fourth Floor | Furnished | Private Balcony | Two Bathrooms | Modern Interior | 24 Hour Concierge | Residents Gym | Open Plan Reception Room

- 4th floor
- 6 month let
- Furnished
- Private balcony
- Two bathrooms
- Two bedrooms

Six Month Let Only.

This modern two bedroom apartment is located on the fourth floor within Moro Apartments which is part of the popular New Festival Quarter development.

The property comprises entrance hall, one double bedroom, a single bedroom, an open plan reception room with fully fitted kitchen and access to a private balcony and modern bathroom.

Property is to be offered on a furnished basis and is suited to those that also work from home with a fully kitted standing desk setup including high speed internet.

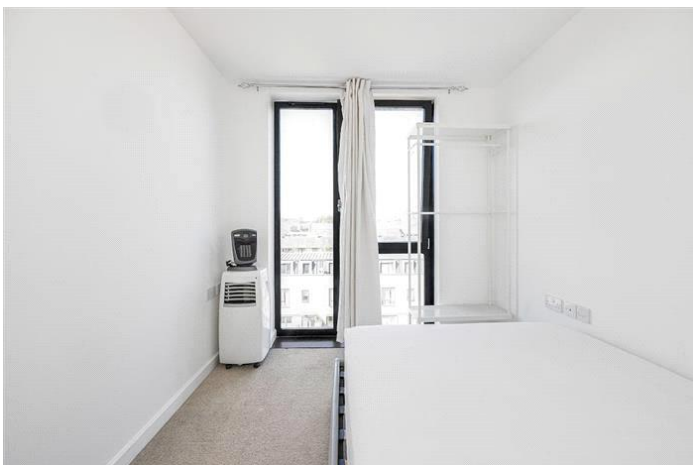
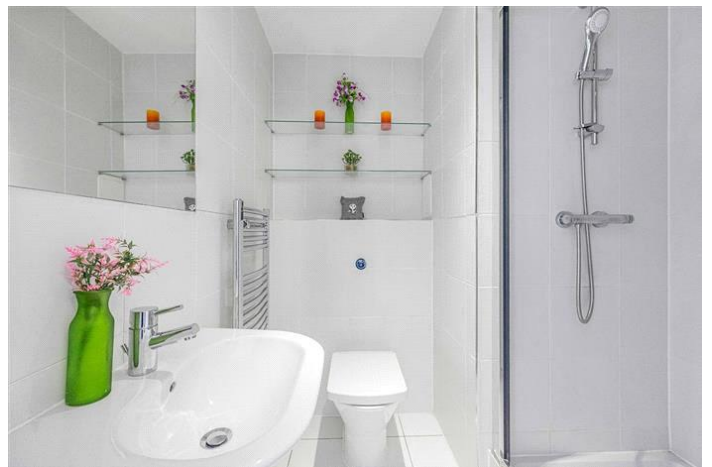
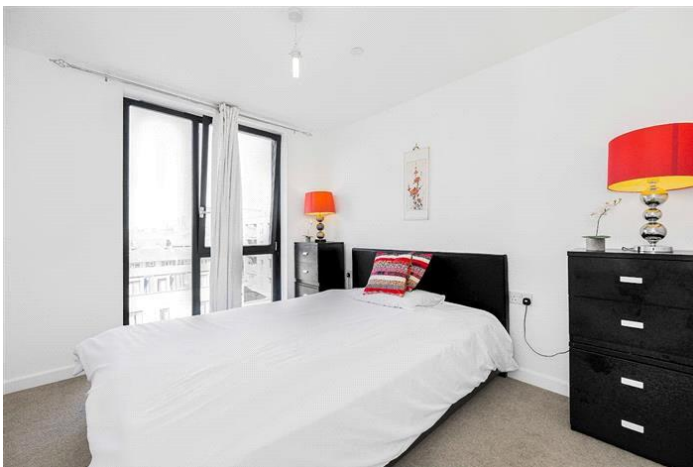
New Festival Quarter features a 24 hour concierge and residents gym.

Located within close proximity to Westferry DLR station and Canary Wharf.

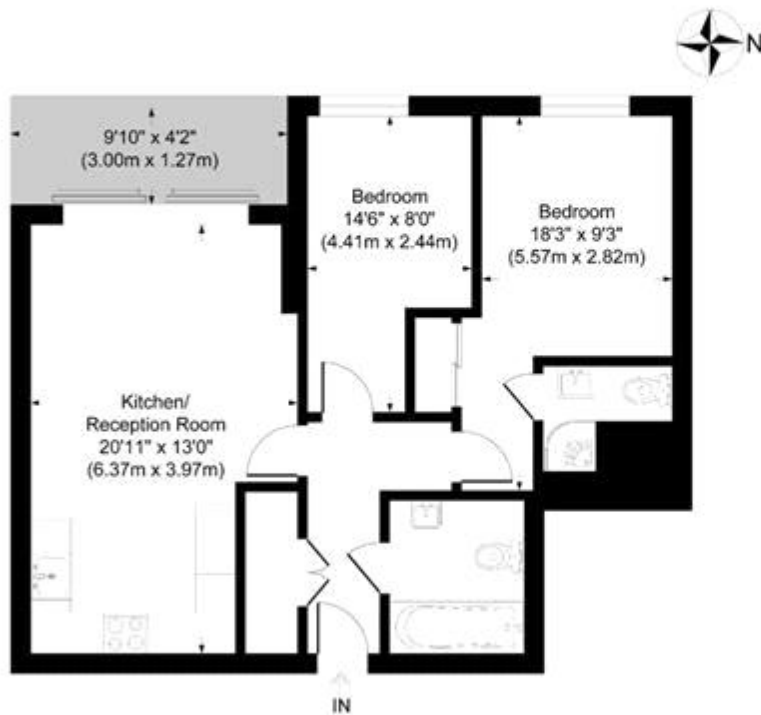
Council Tax Band: D

Deposit: £2,480.76

Holding Deposit: £496.15



MORO APARTMENTS, POPLAR, E14
£2,150 PCM



Moro Apartments New Festival Avenue

Approximate Gross Internal Area
Total = 64.1 sq m / 691 sq ft

This plan is for layout guidance only. Not drawn to scale unless stated. Windows and door openings are approximate. Whilst every care is taken in the preparation of this plan, please check all dimensions, shapes and compass bearings before making any decisions reliant upon them.

powered by:
THE360IMAGE
www.the360image.co.uk

Energy Efficiency Rating		
	Current	Potential
Very energy efficient - lower running costs		
(92-100) A		
(81-91) B		
(69-80) C	73	81
(55-68) D		
(39-54) E		
(21-38) F		
(1-20) G		
Not energy efficient - higher running costs		
England & Wales	EU Directive 2002/91/EC	

The energy efficiency rating is a measure of the overall efficiency of a home. The higher the rating the more energy efficient the home is and the lower the fuel bills will be.



Whilst every effort is made to ensure the accuracy of these details, it should be noted that the measurements are approximate only. Floorplans are for representation purposes only and prepared according to the RICS Code of Measuring Practice by our floorplan provider. Therefore, the layout of doors, windows and rooms are approximate and should be regarded as such by any prospective tenant.