



## FORGE SQUARE, ISLE OF DOGS, E14

**LET**

£1,740 PCM

One Bedroom Apartment | Furnished | Gated Development | Available Immediately | Open Plan Reception | Large Master Bedroom | Modern Bathroom | Well Presented Throughout | Close to Mudchute DLR Station

- Furnished
- Modern development
- One bathroom
- One bedroom

This stylish one bedroom apartment is offered to the market in immaculate condition is available immediately.

The property is furnished and accommodation includes entrance hall, open plan reception room with fitted kitchen, master bedroom with a built-in wardrobe and a modern family bathroom.

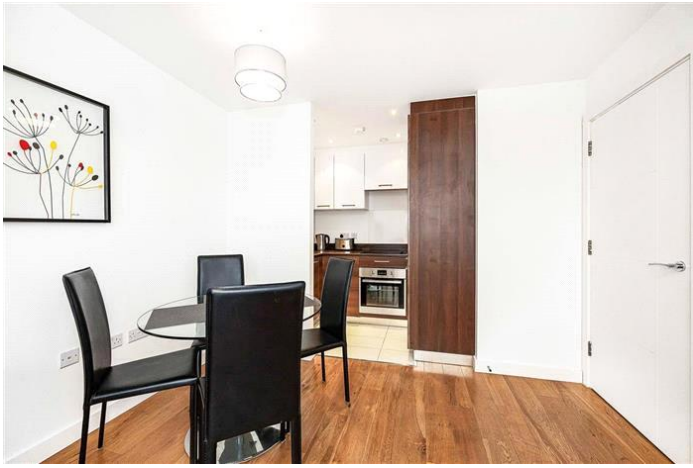
The Forge is a gated development that includes a day time porter.

Located within close proximity to both Mudchute DLR & Island Gardens DLR as well as local bus routes, the Thames Clipper and Canary Wharf.

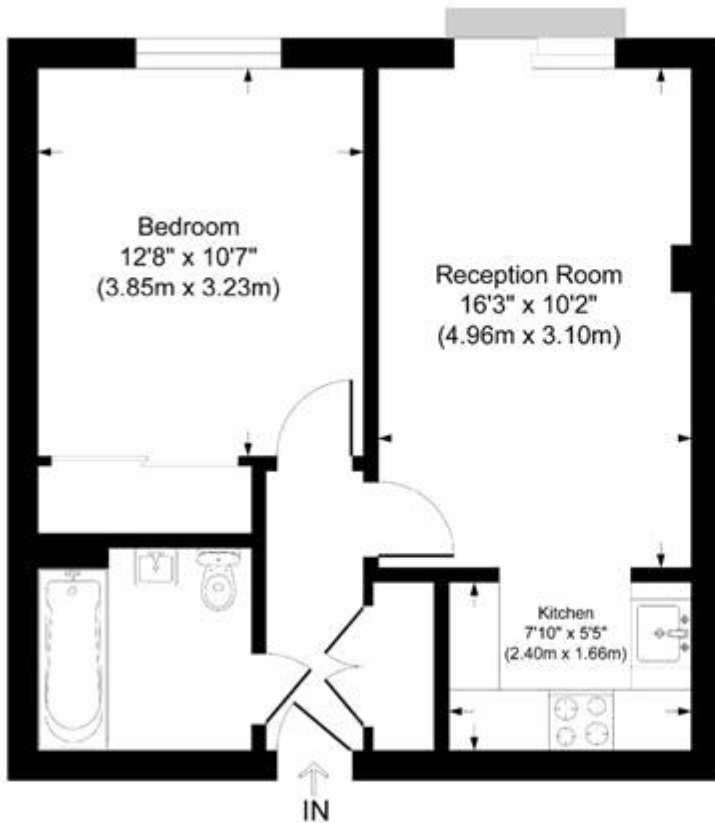
Council Tax Band: E

Deposit: £2,007.69

Holding Deposit: £401.53



FORGE SQUARE, ISLE OF DOGS, E14  
£1,740 PCM



## Forge Square London

Approximate Gross Internal Area  
Total = 43.8 sq m / 472 sq ft

This plan is for layout guidance only. Not drawn to scale unless stated. Windows and door openings are approximate. Whilst every care is taken in the preparation of this plan, please check all dimensions, shapes and compass bearings before making any decisions reliant upon them.



Energy Efficiency Rating		Current	Potential
<i>Very energy efficient - lower running costs</i>			
(92-100) <b>A</b>			
(81-91) <b>B</b>		83	83
(69-80) <b>C</b>			
(55-68) <b>D</b>			
(39-54) <b>E</b>			
(21-38) <b>F</b>			
(1-20) <b>G</b>			
<i>Not energy efficient - higher running costs</i>			
<b>England &amp; Wales</b>	EU Directive 2002/91/EC		

The energy efficiency rating is a measure of the overall efficiency of a home. The higher the rating the more energy efficient the home is and the lower the fuel bills will be.



Whilst every effort is made to ensure the accuracy of these details, it should be noted that the measurements are approximate only. Floorplans are for representation purposes only and prepared according to the RICS Code of Measuring Practice by our floorplan provider. Therefore, the layout of doors, windows and rooms are approximate and should be regarded as such by any prospective tenant.