

## BECQUEREL COURT, GREENWICH, SE10

**LET**

£1,700 PCM

One Bedroom Apartment | Furnished | First Floor | Large L-Shaped Balcony | Second Balcony | Open Plan Reception | Fitted Kitchen | Family Bathroom | Bright & Spacious | Close To North Greenwich Station

- First floor
- Furnished
- One bathroom
- One bedroom
- Two balconies

A spacious first floor, one bedroom apartment situated in the popular Greenwich Millennium Village.

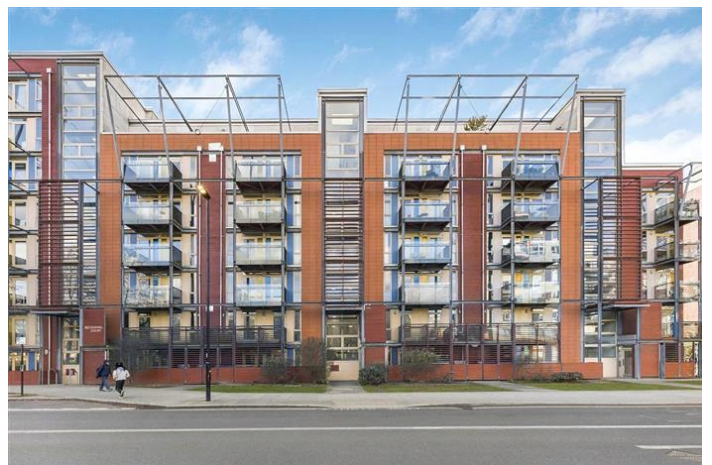
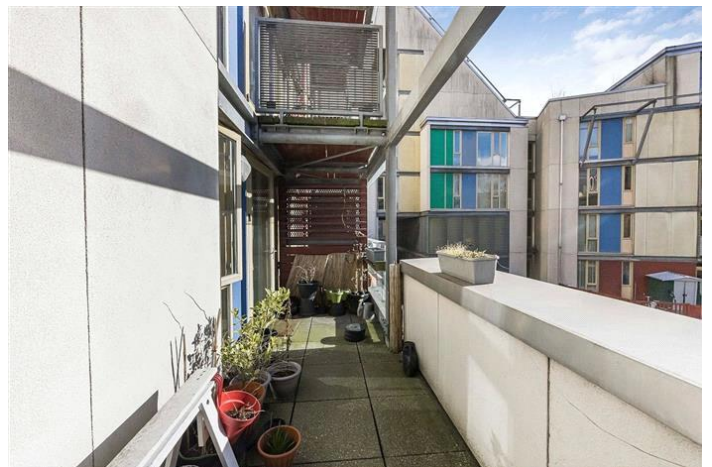
This apartment comprises entrance hall, open plan reception room with fitted kitchen and access to a large, L-shaped balcony, double bedroom with access to a second balcony and family bathroom.

The property is ideally located being within a short walk to North Greenwich station which offers very easy access into Canary Wharf.

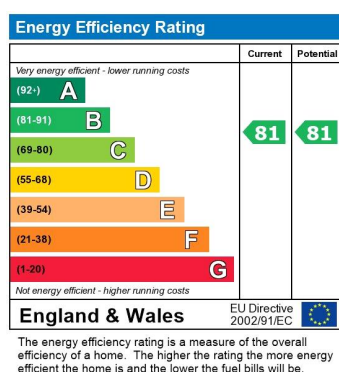
Council Tax Band: C

Deposit: £1,961.53

Holding Deposit: £392.30



BECQUEREL COURT, GREENWICH, SE10  
£1,700 PCM



Whilst every effort is made to ensure the accuracy of these details, it should be noted that the measurements are approximate only. Floorplans are for representation purposes only and prepared according to the RICS Code of Measuring Practice by our floorplan provider. Therefore, the layout of doors, windows and rooms are approximate and should be regarded as such by any prospective tenant.