



KARA COURT, BOW, E3

£8,500 PCM

Three Bedroom Penthouse Apartment | Upgraded Specification Throughout | Two Large Terraces | Four Bathrooms | Allocated Parking | Furnished | Over 2900 Sq Ft | Split Level | Amazing Views | Available Now | 24 Hour Concierge | Close To Local Transport Links

- Three bedroom penthouse apartment
- High specification finish
- Two private terraces

Offered to the market is this truly stunning three double bedroom penthouse apartment.

Boasting over 2900 sq ft of internal living space, this apartment has been finished to one of the highest standards and includes Tom Dixon lighting, SONOS audio systems throughout, Miele kitchen appliances and comfort cooling.

Split over two floors, the property features three double bedrooms, two large private terraces, incredibly spacious kitchen, dining and living area, a further reception room, ample storage and four bathrooms.

Allocated parking is also included.

Situated between Devons Road DLR and Langdon Park DLR stations which provide superb access into Canary Wharf, Greenwich or towards The City.

The nearest underground station is Bromley-By-Bow which takes you into Liverpool Street and beyond.

Council Tax Band: F

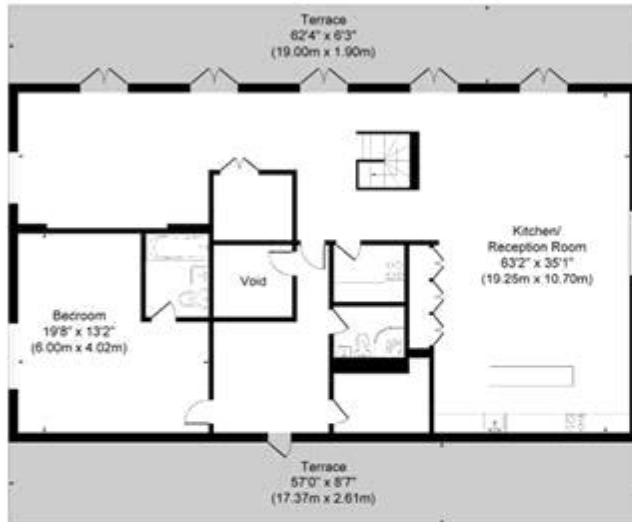
Deposit: £9,807.69

Holding Deposit: £1,961.53

Parking options: Underground



KARA COURT, BOW, E3
£8,500 PCM

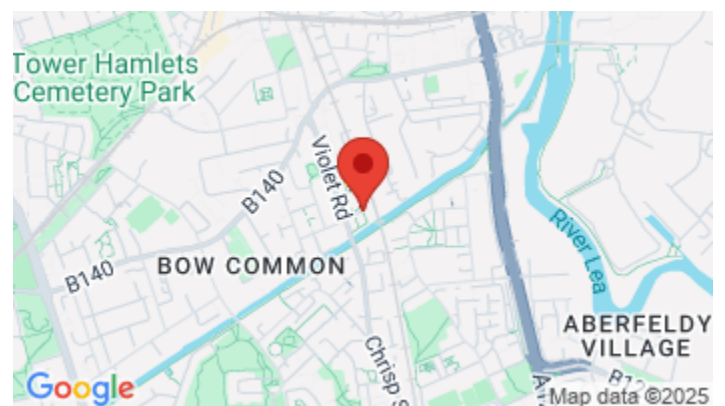


Kara Court Seven Sea Gardens

Approximate Gross Internal Area
Total = 270.7 sq m / 2914 sq ft



This plan is for layout guidance only. Not drawn to scale unless stated. Windows and door openings are approximate. Whilst every care is taken in the preparation of this plan, please check all dimensions, shapes and compass bearings before making any decisions reliant upon them.



Whilst every effort is made to ensure the accuracy of these details, it should be noted that the measurements are approximate only. Floorplans are for representation purposes only and prepared according to the RICS Code of Measuring Practice by our floorplan provider. Therefore, the layout of doors, windows and rooms are approximate and should be regarded as such by any prospective tenant.