



CERAM COURT, BOW, E3

£1,750 PCM

One Bedroom Apartment | Ground Floor | Private Terrace |
Furnished | Open Plan Reception | Built-In Wardrobes |
Modern Development | 24 Hour Concierge | Close To Devons
Road DLR Station

- Furnished
- Ground floor
- One bathroom
- One bedroom
- Private terrace

A modern ground floor, one bedroom apartment which includes a private terrace and is offered on a furnished basis.

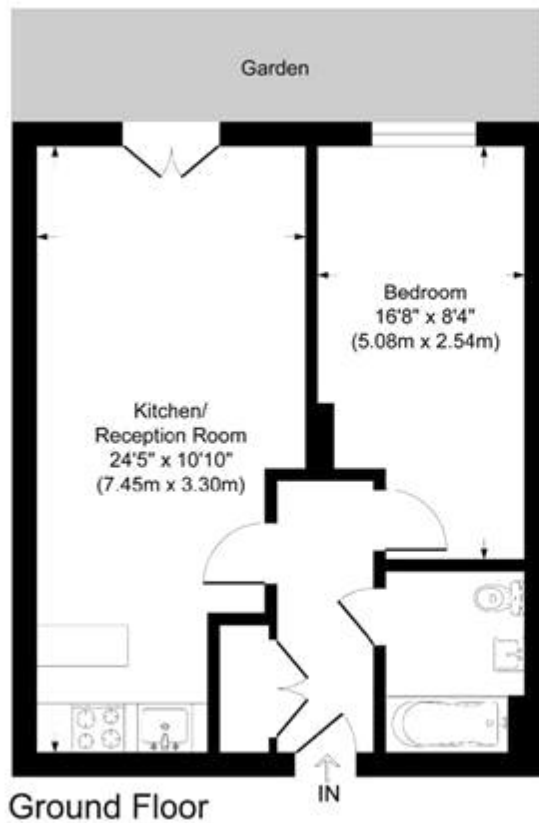
The property consists of entrance hall with cupboard, open plan reception room with fully integrated kitchen, private terrace, double bedroom with built in wardrobes and stylish bathroom.

Caspian Wharf includes a 24 hour concierge and is located within a short distance to Devons Road DLR station which provides easy access into Canary Wharf and the City.

Council Tax Band: C
Deposit: £2,169.23
Holding Deposit: £433.84
Garden details: Terrace



CERAM COURT, BOW, E3
£1,750 PCM



Ceram Court Seven Sea Gardens

Approximate Gross Internal Area
Total = 44.6 sq m / 480 sq ft

This plan is for layout guidance only. Not drawn to scale unless stated. Windows and door openings are approximate. Whilst every care is taken in the preparation of this plan, please check all dimensions, shapes and compass bearings before making any decisions reliant upon them.

powered by
THE360IMAGE
www.the360image.co.uk



Whilst every effort is made to ensure the accuracy of these details, it should be noted that the measurements are approximate only. Floorplans are for representation purposes only and prepared according to the RICS Code of Measuring Practice by our floorplan provider. Therefore, the layout of doors, windows and rooms are approximate and should be regarded as such by any prospective tenant.