

HORIZONS TOWER, CANARY WHARF, E14

£2,250 PCM

One Bedroom Apartment | Stunning Views | Private Balcony |
Modern Development | Furnished | Open Plan Reception Room
| Fitted Kitchen | 24 Hour Concierge | Residents Gym |
Walking Distance To Canary Wharf

- 24 hour concierge
- Furnished
- One bathroom
- One bedroom
- Private balcony
- Residents gym
- Stunning views

This stunning one bedroom apartment enjoys amazing views towards Canary Wharf, the river Thames and the O2 arena.

Offered on a furnished basis, this apartment comprises entrance hall, open plan reception room with fitted kitchen, private balcony, double bedroom and modern bathroom.

Horizons Tower features a 24 hour concierge and residents gym.

The development is well located being within walking distance to Blackwall DLR station as well as the Canary Wharf estate.

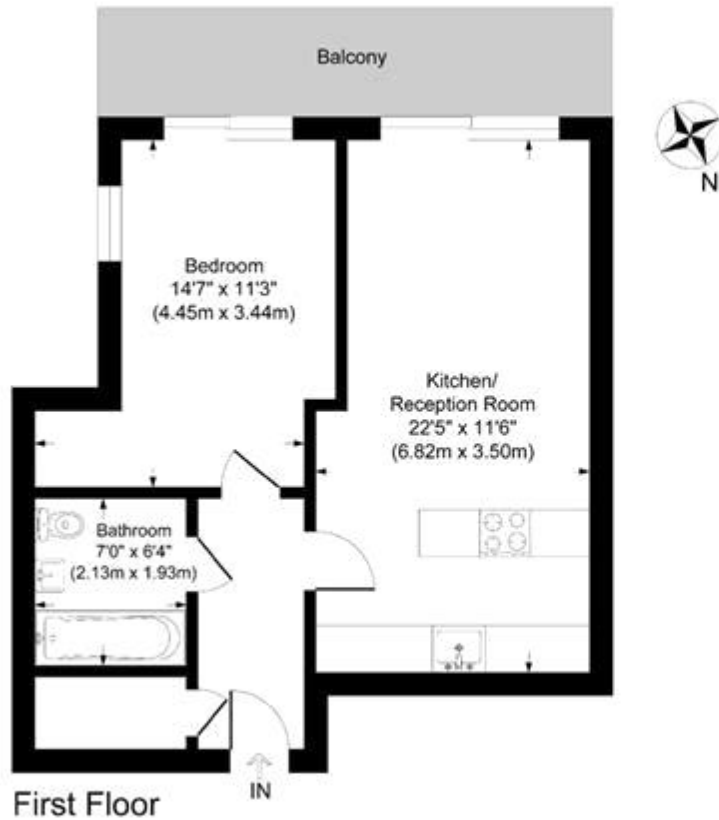
Council Tax Band: E

Deposit: £2,596.15

Holding Deposit: £519.23



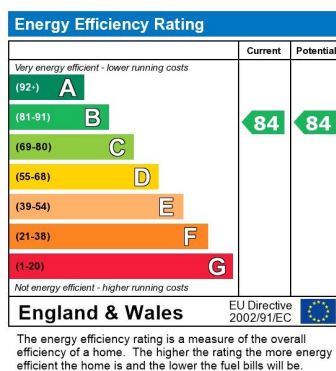
HORIZONS TOWER, CANARY WHARF, E14
£2,250 PCM



Horizons Tower Yabsley Street

Approximate Gross Internal Area
Total = 47.9 sq m / 516 sq ft

This plan is for layout guidance only. Not drawn to scale unless stated. Windows and door openings are approximate. Whilst every care is taken in the preparation of this plan, please check all dimensions, shapes and compass bearings before making any decisions reliant upon them.



Whilst every effort is made to ensure the accuracy of these details, it should be noted that the measurements are approximate only. Floorplans are for representation purposes only and prepared according to the RICS Code of Measuring Practice by our floorplan provider. Therefore, the layout of doors, windows and rooms are approximate and should be regarded as such by any prospective tenant.