

## STAGE APARTMENTS, SHOREDITCH, EC2A

### £2,750 PCM

**LET**

Internal Photos To Follow Shortly | One Bedroom Apartment | 23rd Floor | Two Balconies | One Bathroom | Furnished | Open Plan Reception Room | Ample Storage | Stunning Views | World Class Resident Facilities | Located In The Heart Of Shoreditch

- Furnished
- One bathroom
- One bedroom
- Two balconies
- 23d floor

Internal Photos To Follow Shortly - Enquire Now To Book An Early Viewing

This one bedroom apartment located within 'The Stage' has been finished to one of the highest standards and is available on a furnished basis.

Positioned on the 23rd floor, the apartment boasts stunning views and comprises an open plan reception room with access to a private balcony, master bedroom with built-in wardrobes and access to a second balcony and a luxurious shower room.

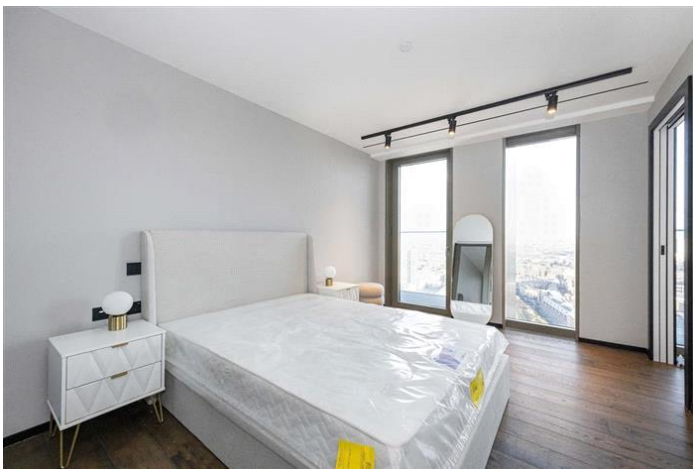
Resident facilities include a 24 hour concierge service, a 32nd floor sky lounge and terrace, a bowling and games room, a golf simulator, two cinema rooms, gymnasium, a co-working suite and conference rooms.

Transportation connections around The Stage are exceptional, with easy access to all of London's principal destinations, including those for domestic and international air travel. From Liverpool Street, just a short walk away, there are 7 tube, rail, and overground services available, making it easy to get around the city and beyond.

Council Tax Band: E

Deposit: £2,884.61

Holding Deposit: £576.92



STAGE APARTMENTS, SHOREDITCH, EC2A  
£2,750 PCM



## Hewitt Street

Approximate Gross Internal Area  
Total = 52.0 sq m / 560 sq ft

This plan is for layout guidance only. Not drawn to scale unless stated. Windows and door openings are approximate. Whilst every care is taken in the preparation of this plan, please check all dimensions, shapes and compass bearings before making any decisions reliant upon them.



Energy Efficiency Rating		
	Current	Potential
Very energy efficient - lower running costs		
(92-) <b>A</b>		
(81-91) <b>B</b>	85	85
(69-80) <b>C</b>		
(55-68) <b>D</b>		
(39-54) <b>E</b>		
(21-38) <b>F</b>		
(1-20) <b>G</b>		
Not energy efficient - higher running costs		
<b>England &amp; Wales</b>	EU Directive 2002/91/EC	

The energy efficiency rating is a measure of the overall efficiency of a home. The higher the rating the more energy efficient the home is and the lower the fuel bills will be.



Whilst every effort is made to ensure the accuracy of these details, it should be noted that the measurements are approximate only. Floorplans are for representation purposes only and prepared according to the RICS Code of Measuring Practice by our floorplan provider. Therefore, the layout of doors, windows and rooms are approximate and should be regarded as such by any prospective tenant.