



ECHO HOUSE, HAINAULT, IG6

£335,000 Leasehold

Two Bedroom Apartment | First Floor | Private Enclosed Balcony | Two Bathrooms | Large Open Plan Reception Room | Fitted Kitchen | Gas Central Heating | No Onward Chain | Close To Hainault Central Line Station

- Two Bedroom Apartment
- First Floor
- Fitted Kitchen
- No Onward Chain
- Open Plan Reception
- Two Bathrooms
- Enclosed Balcony

Positioned on the first floor is this modern two bedroom apartment which is offered to the market with no onward chain.

The property boasts just over 800 sq ft of internal living space and comprises entrance hall with storage cupboard, open plan reception room with fully fitted kitchen, private enclosed balcony, master bedroom with en-suite shower room, second bedroom and main family bathroom.

Additional features include video entry phone, floor to ceiling windows, fob access, lift and gas central heating.

Echo House forms part of the popular New North Square development and is located within a short walk to Hainault Central line station.

Council Tax Band: C

Tenure: Leasehold (114 years)

Ground Rent: £380 per year

Service Charge: £1,785 per year

The information provided about this property are set out as a general outline for guidance and do not represent or form part of an offer or contract, nor may it be regarded as representations.

Whilst Alter&Cope uses reasonable endeavours to ensure that the information provided is materially correct, some of the information is provided from third parties and has not been verified by us. All interested parties should not rely on this information as a statement or representation of fact, but must verify accuracy themselves by their own inspection, searches, enquiries, surveys or otherwise as to the accuracy and completeness.

Your solicitor must verify tenure/lease information, fixtures & fittings and, where the property has been extended/converted, planning/building regulation consents.

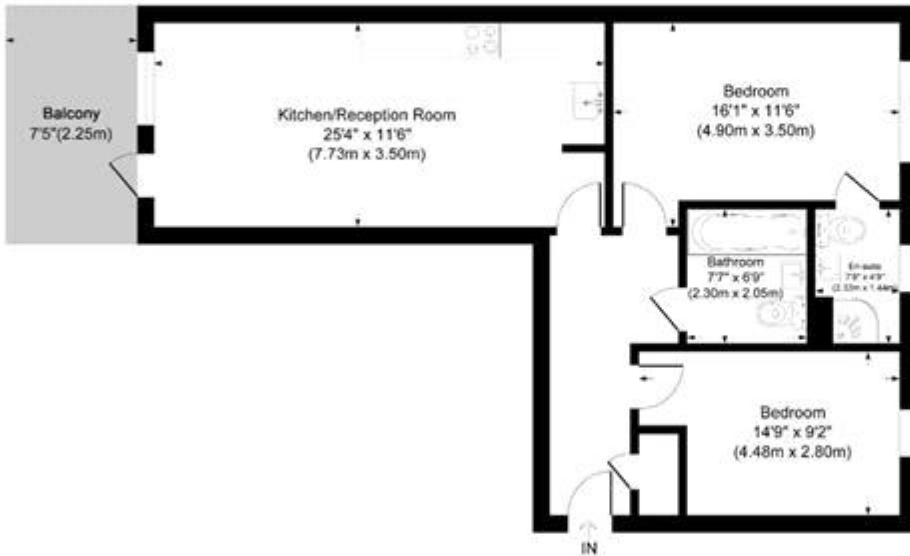
The tenure/lease, service charge and ground rent information are subject to change, and the information we have supplied was provided by the seller at the time of instruction.

Alter&Cope have not tested any appliances, fixtures and fittings or services. All dimensions noted on the floor plan are approximate and quoted for guidance only and their accuracy cannot be confirmed.



ECHO HOUSE, HAINAULT, IG6

£335,000 Leasehold



First Floor



Echo House Marine Crescent

Approximate Gross Internal Area
Total = 74.3 sq m / 801 sq ft

This plan is for layout guidance only. Not drawn to scale unless stated. Windows and door openings are approximate. Whilst every care is taken in the preparation of this plan, please check all dimensions, shapes and compass bearings before making any decisions reliant upon them.

powered by
THE360IMAGE
www.the360image.co.uk

Energy Efficiency Rating		Current	Potential
<i>Very energy efficient - lower running costs</i>			
(92-)	A		
(81-91)	B	84	84
(69-80)	C		
(55-68)	D		
(39-54)	E		
(21-38)	F		
(1-20)	G		
<i>Not energy efficient - higher running costs</i>			
England & Wales		EU Directive 2002/91/EC	

The energy efficiency rating is a measure of the overall efficiency of a home. The higher the rating the more energy efficient the home is and the lower the fuel bills will be.



Whilst every effort is made to ensure the accuracy of these details, it should be noted that the measurements are approximate only. Floorplans are for representation purposes only and prepared according to the RICS Code of Measuring Practice by our floorplan provider. Therefore, the layout of doors, windows and rooms are approximate and should be regarded as such by any prospective purchaser. Any internal photographs are intended as a guide only and it should not be assumed that any of the furniture/fitments are included in any sale. Where shown, details of lease, ground rent and service charge are provided by the vendor and their accuracy cannot be guaranteed, as the information may not have been verified and further checks should be made either through your solicitor/conveyance. Where appliances, including central heating, are mentioned, it cannot be assumed that they are in working order, as they have not been tested. Please also note that wiring, plumbing and drains have not been checked.