



GALAXY BUILDING, ISLE OF DOGS, E14

£2,450 PCM

Two Bedroom Split Level Apartment | Arranged Over The Ground & First Floor | Furnished | Guest WC | One Bathroom | Open Plan Reception Room | Residents Gym | 24 Hour Concierge

- One bathroom
- Split level apartment
- Two bedrooms

A beautifully presented two-bedroom split-level apartment set within the sought-after Galaxy Building in the heart of E14.

This spacious apartment offers an open-plan living area with modern kitchen with base and wall units and integrated appliances, a guest WC, two double bedrooms and a family bathroom.

Residents of Galaxy Building enjoy a prime Docklands location, within easy reach of Canary Wharf, excellent transport links, riverside walks, and a wide range of shops, cafés, and restaurants.

Council Tax Band: E

Deposit: £2,826.92

Holding Deposit: £565.38

The information provided about this property are set out as a general outline for guidance and do not represent or form part of an offer or contract, nor may it be regarded as representations.

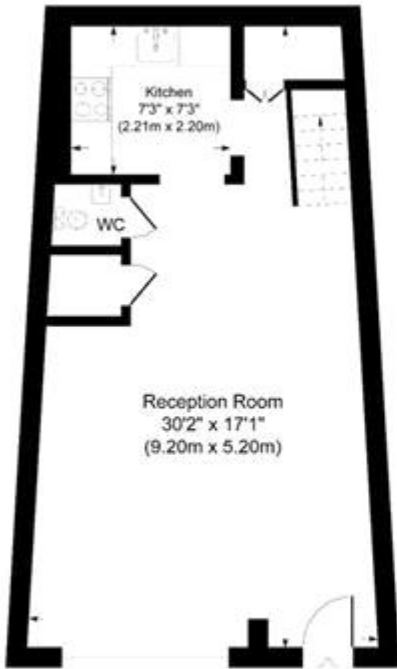
Whilst Alter&Cope uses reasonable endeavours to ensure that the information provided is materially correct, some of the information is provided from third parties and has not been verified by us. All interested parties should not rely on this information as a statement or representation of fact, but must verify accuracy themselves by their own inspection, searches, enquiries, surveys or otherwise as to the accuracy and completeness.

Alter&Cope have not tested any appliances, fixtures and fittings or services. All dimensions noted on the floor plan are approximate and quoted for guidance only and their accuracy cannot be confirmed.

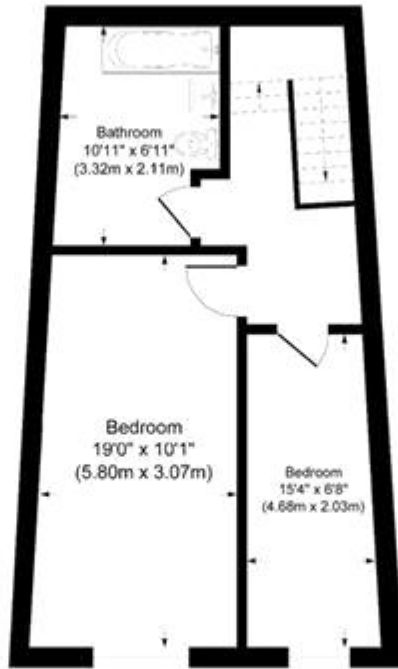
Furniture, fixtures and fittings must be verified and it should not be assumed that items from the marketing photos belong at the property.



GALAXY BUILDING, ISLE OF DOGS, E14
£2,450 PCM



Ground Floor



First Floor



**Galaxy Building
Crews Street**

Approximate Gross Internal Area
 Ground Floor = 42.7 sq m / 460 sq ft
 First Floor = 42.7 sq m / 460 sq ft
 Total = 85.4 sq m / 920 sq ft

This plan is for layout guidance only. Not drawn to scale unless stated. Windows and door openings are approximate. Whilst every care is taken in the preparation of this plan, please check all dimensions, shapes and compass bearings before making any decisions reliant upon them.



Whilst every effort is made to ensure the accuracy of these details, it should be noted that the measurements are approximate only. Floorplans are for representation purposes only and prepared according to the RICS Code of Measuring Practice by our floorplan provider. Therefore, the layout of doors, windows and rooms are approximate and should be regarded as such by any prospective tenant.